

REVIEW ARTICLE

Dan L. Longo, M.D., *Editor*

Ectopic Fat in Insulin Resistance, Dyslipidemia, and Cardiometabolic Disease

Gerald I. Shulman, M.D., Ph.D.

TYPE 2 DIABETES CURRENTLY AFFECTS MORE THAN A THIRD OF A BILLION people worldwide and is the leading cause of end-stage renal disease, non-traumatic loss of limb, and blindness in working adults, with estimated annual worldwide health care costs exceeding half a trillion dollars.¹ Furthermore, the worldwide prevalence of type 2 diabetes is projected to increase by more than 75% during the next two decades, with the largest increases occurring in Asia and the Indian subcontinent.¹ Although impaired beta-cell function is ultimately responsible for the progression from normoglycemia to hyperglycemia, insulin resistance predates beta-cell dysfunction and plays a major role in the pathogenesis of type 2 diabetes.^{2,3} After carbohydrate ingestion, glucose is deposited primarily in muscle and the liver as glycogen, and alterations in insulin responsiveness in these organs result in fasting and postprandial hyperglycemia.^{4,5}

In this review, I focus on recent studies using magnetic resonance spectroscopy (MRS) that have implicated ectopic lipid accumulation in the pathogenesis of insulin resistance in muscle and the liver and have clarified the role of muscle-specific insulin resistance in promoting increased hepatic lipogenesis, nonalcoholic fatty liver disease, and atherogenic dyslipidemia. I then propose a potential link between inflammation and macrophage-induced lipolysis in the progression from ectopic lipid-induced insulin resistance to impaired glucose tolerance and type 2 diabetes.

GLUCOSE-FATTY-ACID CYCLE HYPOTHESIS OF INSULIN RESISTANCE IN MUSCLE

The association between excess lipid storage in the form of obesity and insulin resistance has long been recognized, and proton (¹H) MRS studies have shown an even stronger relationship between intramyocellular lipid content and insulin resistance in muscle.⁶⁻⁸ However, the molecular mechanism by which fat causes insulin resistance continues to be debated. More than half a century ago, Randle and co-workers proposed that an increase in fatty acid oxidation would result in an increased ratio of intramitochondrial acetyl coenzyme A (CoA) to CoA and an increased ratio of NADH to NAD⁺, with subsequent inactivation of pyruvate dehydrogenase activity leading to reductions in glucose oxidation (Fig. 1A).⁹ This in turn would cause intracellular citrate concentrations to increase, leading to inhibition of phosphofructokinase, a key rate-controlling enzyme in glycolysis. Inhibition of glycolysis at this step would lead to increased concentrations of intracellular glucose-6-phosphate (G6P), which would inhibit hexokinase activity, resulting in an increase in intracellular glucose concentrations and decreased glucose uptake by muscle.

However, contrary to this hypothesis, phosphorus-31 (³¹P) and carbon-13 (¹³C) MRS studies that measured concentrations of G6P and glucose, respectively, in

From the Howard Hughes Medical Institute and the Departments of Internal Medicine and Cellular and Molecular Physiology, Yale University School of Medicine, New Haven, CT. Address reprint requests to Dr. Shulman at gerald.shulman@yale.edu.

This article was updated on December 4, 2014, at NEJM.org.

N Engl J Med 2014;371:1131-41.

DOI: 10.1056/NEJMra1011035

Copyright © 2014 Massachusetts Medical Society.

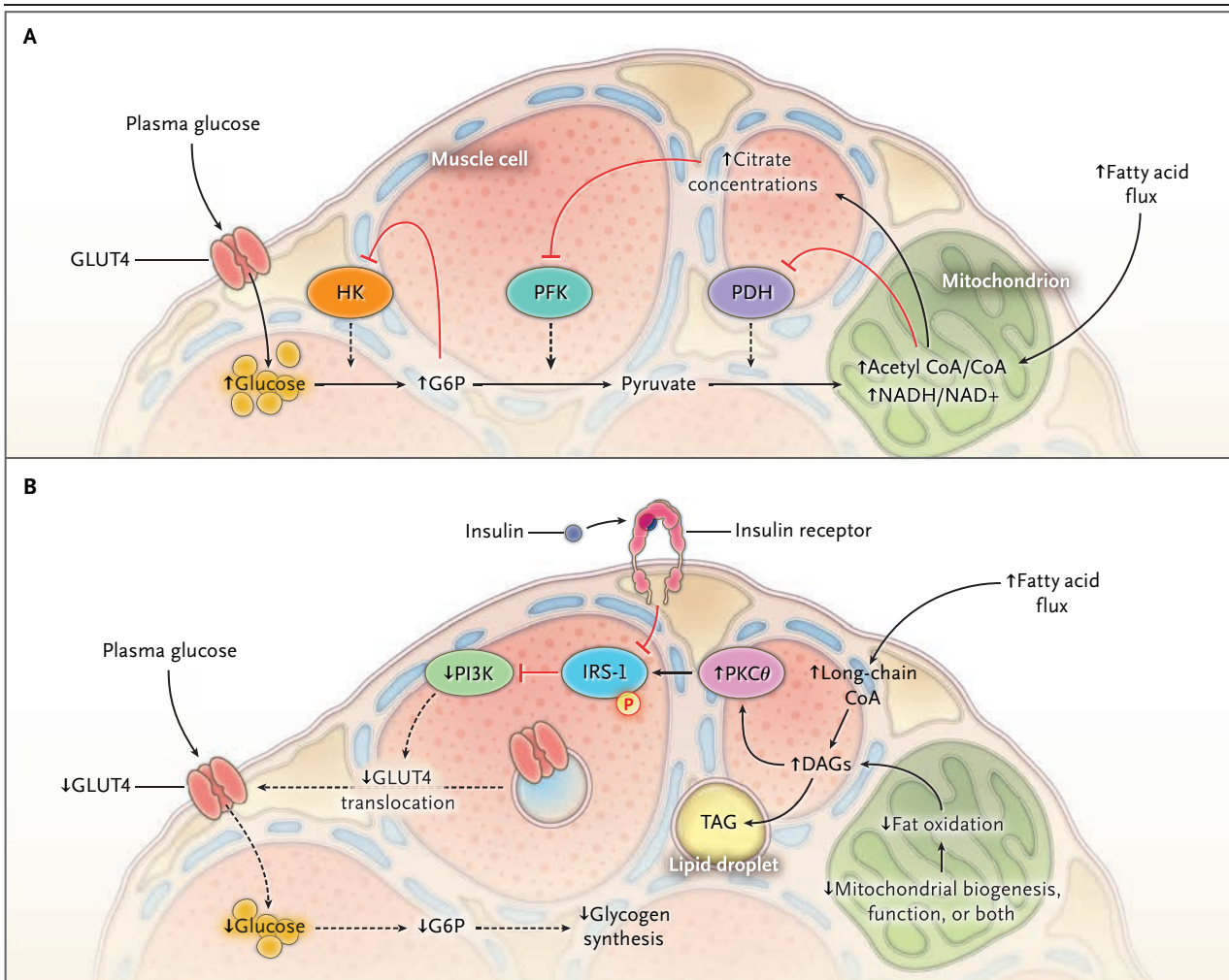


Figure 1. Molecular Mechanisms of Lipid-Induced Insulin Resistance in Muscle.

According to the Randle hypothesis,⁹ an increase in fatty acid oxidation in muscle results in an increase in the ratio of intramitochondrial acetyl coenzyme A (CoA) to CoA and in the ratio of NADH to NAD⁺, leading to inactivation of pyruvate dehydrogenase (PDH) and reductions in glucose oxidation (Panel A). This would result in an increase in intracellular citrate concentrations, leading to inhibition of phosphofruktokinase (PFK), a key rate-controlling enzyme in glycolysis. A subsequent increase in intracellular glucose-6-phosphate (G6P) concentrations leads to inhibition of hexokinase (HK) activity, resulting in increased intracellular glucose concentrations and decreased glucose uptake by muscle. Contrary to these predictions, studies using phosphorus-31 and carbon-13 magnetic resonance spectroscopy showed reductions in intramyocellular G6P^{10,11} and glucose^{10,11} concentrations associated with defects in insulin-stimulated phosphatidylinositol 3-kinase (PI3K) activity during induction of insulin resistance in muscle by means of a lipid infusion (Panel B). These data implicate lipid-induced defects in insulin-stimulated glucose-transport activity, owing to a lipid-induced reduction in insulin signaling, as the primary defect in lipid-induced insulin resistance in muscle and not a lipid-induced reduction in pyruvate dehydrogenase activity, as proposed by Randle et al. These studies and subsequent studies have led to an alternative hypothesis in which a transient increase in myocellular diacylglycerol (DAG) content results in activation of the theta isoform of protein kinase C (PKC θ). This transient increase in DAG content can be attributed to an imbalance of intracellular fluxes in which rates of DAG synthesis, owing to increased fatty acid delivery and uptake into the myocyte, exceed rates of mitochondrial long-chain CoA oxidation and incorporation of DAG into neutral lipid (triacylglycerol [TAG]). Activation of PKC θ leads to increased serine phosphorylation of insulin receptor substrate 1 (IRS-1) on critical sites (e.g., Ser 1101), which in turn blocks insulin-stimulated tyrosine phosphorylation of IRS-1 and subsequent binding and activation of PI3K. This leads to decreased insulin-stimulated glucose-transport activity, resulting in decreased insulin-stimulated glycogen synthesis and glucose oxidation. GLUT4 denotes glucose transporter type 4.

muscle cells showed that both these metabolites (Fig. 1B).^{10,11} The reduction in insulin-stimulated glucose-transport activity in healthy persons decreased in human muscle during induction of insulin resistance by means of a lipid infusion that is induced during a lipid infusion is similar

to that observed in obese persons with insulin resistance,¹² in patients with type 2 diabetes,¹³ and in lean, normoglycemic persons with insulin resistance whose parents have type 2 diabetes.¹⁴ Taken together, these data led to an alternative hypothesis that accumulation of an intracellular lipid metabolite mediates insulin resistance associated with obesity and type 2 diabetes by causing defects in insulin signaling and reduced insulin-stimulated glucose-transport activity (Fig. 1B).^{11,15}

MOLECULAR MECHANISMS
OF INSULIN RESISTANCE
IN MUSCLE AND THE LIVER

Insulin action in muscle and the liver requires a coordinated relay of intracellular signals involving mostly phosphorylation and dephosphorylation events. In skeletal muscle, insulin binds and activates the insulin receptor tyrosine kinase, with subsequent phosphorylation of insulin receptor substrate 1 (IRS-1) (Fig. 1B). When phosphorylated, IRS-1 binds and activates phosphatidylinositol 3-kinase (PI3K), which in turn, through signaling intermediaries, promotes translocation of glucose transporter type 4 (GLUT4) to the plasma membrane, resulting in glucose uptake into the skeletal muscle. Insulin-stimulated tyrosine phosphorylation of IRS-1 and associated PI3K activation have been shown to be impaired in muscle during lipid infusion in humans¹¹ and rodents,^{15,16} indicating that the lipid-induced reduction in insulin-stimulated glucose transport could be attributable to a proximal defect in insulin signaling owing to an intracellular fatty acid-derived signal.¹¹

This signal was identified in studies of lipid-infused rodents and rodents fed high-fat diets, which showed transient increases in muscle diacylglycerol (DAG) content¹⁶ and sustained activation of the theta form of protein kinase C (PKC θ),^{10,13} leading to activation of a serine-threonine kinase cascade and inhibition of insulin signaling. Furthermore, lipid-induced PKC θ activation in these studies could be dissociated from increases in other putative lipid signals such as muscle ceramide and triglyceride content.¹⁶ The importance of DAG–novel protein kinase C (nPKC) activation and serine phosphorylation of IRS-1 for mediating lipid-induced insulin resistance in muscle was subsequently shown in mice lacking PKC θ ¹⁷ and mice carry-

ing Ser→Ala mutations in key residues of IRS-1 (preventing serine hyperphosphorylation of IRS-1); both types of mice were protected from lipid-induced insulin resistance in muscle.¹⁸ Additional *in vitro* studies have shown that IRS-1 at Ser 1101 is a target of PKC θ that inhibits insulin signaling.¹⁹

Similar findings have been reported in humans: DAG content has been shown to increase transiently in human skeletal muscle after infusion of lipid plus heparin²⁰ or lipid only,²¹ and increased DAG content in muscle is associated with increases in PKC θ activity and phosphorylation of IRS-1 at Ser 1101.²¹ In addition, increased muscle DAG content, along with increased PKC θ activity and increased serine phosphorylation of IRS-1, has been observed in muscle of obese persons with insulin resistance^{21–23} and persons with type 2 diabetes.^{21,24}

DAG activation of an nPKC has been shown to cause insulin resistance in the liver as well as in muscle. Hepatic steatosis and hepatic insulin resistance develop in rodents after just a few days of high-fat feeding, without any significant change in lipid content or insulin resistance in muscle.²⁵ In this model, hepatic steatosis and hepatic DAG accumulation were associated with proximal defects in insulin signaling with decreased insulin-stimulated tyrosine phosphorylation of IRS-1 and IRS-2 by the insulin receptor, ultimately interfering with insulin-induced activation of glycogen synthesis and suppression of glucose production in the liver (Fig. 2).

The defect in insulin-stimulated hepatic glycogen synthesis is similar to that in patients with type 2 diabetes.^{26,27} Though PKC θ expression is minimal in the liver, the epsilon form of protein kinase C (PKC ϵ), another nPKC, is expressed at high levels in the liver and is activated in rodent models of nonalcoholic fatty liver disease. The association between DAG–PKC ϵ activation in the liver and hepatic insulin resistance has now been shown in multiple transgenic or knockout rodent models of nonalcoholic fatty liver disease.^{28–32} More important, increased hepatic DAG content^{33,34} and increased PKC ϵ activity³³ are the strongest predictors of hepatic insulin resistance in obese humans with nonalcoholic fatty liver disease.

The specific role of PKC ϵ in the pathogenesis of hepatic insulin resistance has been genetically validated with the use of antisense oligonucleotides for knockdown of hepatic expression

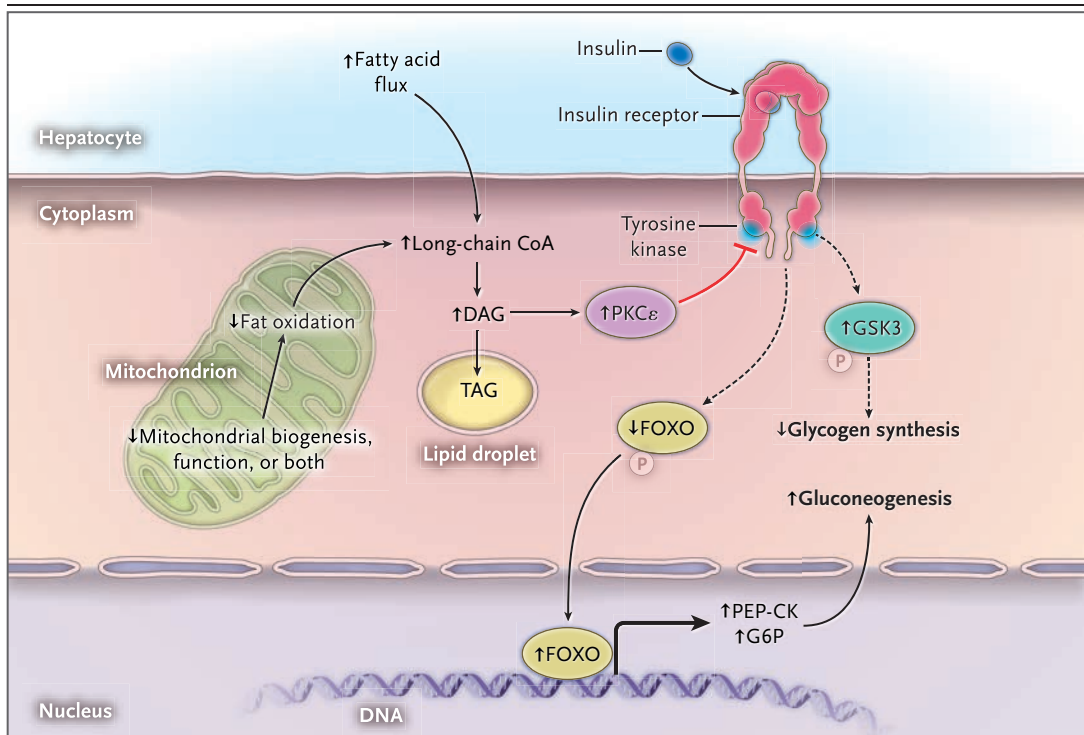


Figure 2. Molecular Mechanisms of Lipid-Induced Hepatic Insulin Resistance.

In the liver, a transient increase in DAG, due to an imbalance of intrahepatocellular fluxes, results in activation of the epsilon isoform of protein kinase C (PKC ϵ). Specifically, this transient increase in hepatocellular DAG occurs when rates of DAG synthesis, from both fatty acid re-esterification and de novo lipogenesis, exceed rates of mitochondrial long-chain CoA (fat) oxidation, rates of DAG incorporation into neutral lipid (TAG), or both. Activated PKC ϵ binds to and inhibits the insulin receptor tyrosine kinase, leading to decreased insulin-stimulated glycogen synthesis in the liver owing to decreased phosphorylation of GSK3. This results in inhibition of glycogen synthase activity and decreased insulin suppression of hepatic gluconeogenesis through decreased phosphorylation of forkhead box subgroup O (FOXO), leading to increased FOXO translocation to the nucleus, where it promotes increased gene transcription of the gluconeogenic enzymes (e.g., phosphoenolpyruvate carboxykinase [PEP-CK] and G6P).

of PKC ϵ . Antisense knockdown of hepatic PKC ϵ expression abrogated lipid-induced defects in hepatic insulin signaling and hepatic insulin resistance in rats fed high-fat diets, despite similar increases in hepatic triacylglycerol or DAG content in control and PKC ϵ knockdown animals. Similar protection from lipid-induced insulin resistance has also been observed in whole-body PKC ϵ knockout mice.³⁵

DISSOCIATION OF OBESITY FROM INSULIN RESISTANCE IN MUSCLE AND THE LIVER

The most common cause of ectopic lipid deposition in skeletal muscle and the liver is a level of energy intake that exceeds the level of energy ex-

penditure, resulting in spillover of energy storage from adipose tissue to the liver and skeletal muscle (Fig. 3). In contrast to obesity, the lipodystrophies offer a unique opportunity to assess the role of ectopic lipid deposition without any contribution from an expansion of peripheral or visceral adipose-tissue mass. The lack of subcutaneous fat leads to hypertriglyceridemia, ectopic fat deposition (including marked hepatic steatosis), and profound insulin resistance in muscle and the liver (Fig. 3).³⁶ In lipotrophic A-ZIP/F-1 mice, which lack adipocytes, fat accumulates in the liver and skeletal muscle, and profound insulin resistance occurs in these tissues.⁴¹ Remarkably, fat obtained from wild-type littermates and transplanted subcutaneously into these fatless mice normalizes ectopic fat content in muscle

and the liver as well as insulin signaling and insulin action in these organs.⁴¹

Further evidence in support of the role of ectopic lipid accumulation in the pathogenesis of insulin resistance in muscle and the liver comes from studies in transgenic mice with overexpression of lipoprotein lipase.⁴² Transgenic mice with targeted overexpression of lipoprotein lipase in the liver have liver-specific fat accumulation and liver-specific insulin resistance. Similarly, transgenic mice with targeted overexpression of lipoprotein lipase in skeletal muscle have muscle-specific fat accumulation and muscle-specific insulin resistance.^{42,43} Taken together, these studies show that ectopic accumulation of intracellular lipid leads to insulin resistance in muscle and the liver even in the absence of peripheral and visceral adiposity and that DAGs are the lipid-derived metabolites responsible for triggering insulin resistance through activation of PKC ϵ in the liver and PKC θ in muscle.

There are a few notable exceptions in which accumulation of ectopic lipid in muscle and the liver has been dissociated from insulin resistance. One exception is the Chanarin–Dorfman syndrome,⁴⁴⁻⁴⁶ which is due to a deficiency in the protein termed comparative gene identification 58 (CGI-58).⁴⁵ Studies have shown that cellular compartmentalization of DAGs within lipid droplets is the likely explanation for the dissociation of ectopic lipid accumulation from insulin resistance in this syndrome.⁴⁵ DAGs in lipid droplets, in contrast to DAGs located in the plasma membrane and cytosolic compartments, do not promote PKC ϵ translocation to the plasma membrane, where PKC ϵ binds to the insulin receptor, leading to inhibition of its tyrosine kinase activity and hepatic insulin resistance.⁴⁵ Whether similar cellular compartmentalization of DAGs within lipid droplets explains the dissociation between increased ectopic lipid accumulation and insulin resistance in other situations, such as in cases of familial hypobetalipoproteinemia⁴⁴ and in muscle of endurance athletes,⁴⁷ remains to be determined.

ROLE OF MITOCHONDRIAL DYSFUNCTION IN ECTOPIC LIPID ACCUMULATION

Lipid content in muscle cells reflects a net balance between rates of fatty acid uptake by the

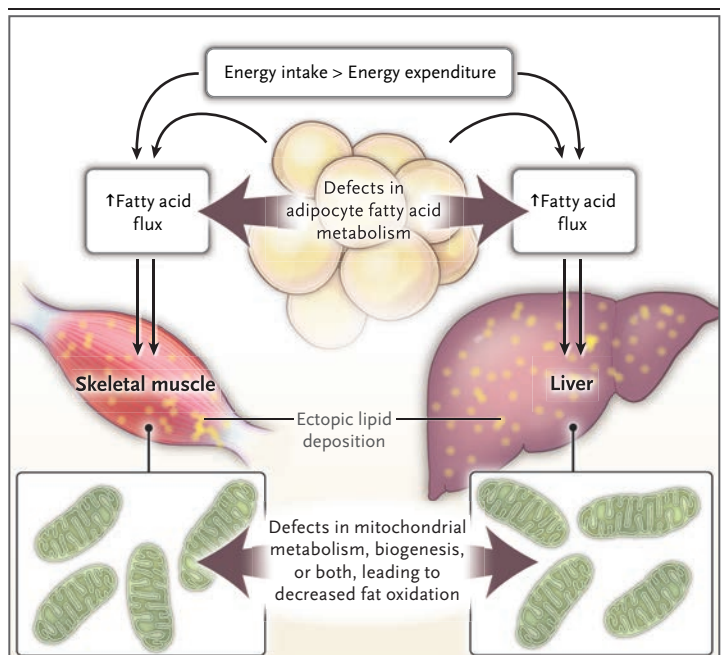


Figure 3. Mechanisms of Increased Ectopic Lipid Deposition in the Liver and Skeletal Muscle.

The most common cause of ectopic lipid deposition in the liver and skeletal muscle is a level of energy intake that exceeds the level of energy expenditure, resulting in spillover of energy storage from adipose tissue to the liver and skeletal muscle. Ectopic lipid deposition in the liver and skeletal muscle can also be due to defects in the storage of energy in fat deposits owing to congenital or acquired lipodystrophy³⁶ or defects in adipocyte metabolism (e.g., defects in lipogenesis or lipolysis and inflammation leading to increased lipolysis). Acquired reductions in mitochondrial metabolism (e.g., from aging^{37,38}) or inherited reductions (e.g., in persons with insulin resistance whose parents have type 2 diabetes^{39,40}) — owing to intrinsic reductions in mitochondrial function, mitochondrial biogenesis, or both — predispose persons to intramyocellular lipid accumulation and insulin resistance in muscle.

cells and rates of mitochondrial fat oxidation. In this regard, acquired mitochondrial dysfunction has been shown to be an important predisposing factor for ectopic lipid accumulation and insulin resistance in the elderly (Fig. 3). Healthy, lean, elderly persons were shown to have markedly reduced insulin-stimulated glucose uptake by muscle as compared with that in young persons matched for lean body mass and fat mass. In elderly persons, insulin resistance in muscle was associated with increased lipid accumulation in muscle cells and a reduction of approximately 40% in both mitochondrial oxidative and phosphorylation activity, as assessed by means of *in vivo* ¹³C and ³¹P MRS, in comparison with mitochondrial oxidative and phosphorylation activity

in young controls.³⁸ These data support the hypothesis that age-associated reductions in mitochondrial function, possibly due to cumulative damage by reactive oxygen species (ROS), predispose the elderly to ectopic lipid accumulation and insulin resistance in muscle.³⁸

Boumezbeur et al. found similar reductions in neuronal mitochondrial activity in healthy elderly persons, observations that are consistent with this hypothesis and suggest that the age-associated reductions in mitochondrial activity may be occurring in multiple organs.⁴⁸ Genetic evidence that age-associated ROS-induced reductions in mitochondrial function play a critical role in the pathogenesis of age-associated insulin resistance in muscle was provided by studies of transgenic mice with an overexpression of human catalase targeted to the mitochondria.³⁷ These mice were protected from age-associated reductions in muscle mitochondrial function and lipid (DAG-PKC θ)-induced insulin resistance in muscle. This protection from an age-induced reduction in mitochondrial function was associated with reduced mitochondrial oxidative damage, preserved ATP synthesis in muscle, and AMP-activated protein kinase-induced mitochondrial biogenesis.^{49,50}

Taken together, these data show that acquired age-associated reductions in mitochondrial function promote ectopic lipid accumulation in skeletal muscle and insulin resistance in muscle. They also suggest that preserving mitochondrial function by reducing mitochondrial oxidative damage may be a therapeutic target for preventing age-associated reduction in muscle mitochondrial function, insulin resistance in muscle, and type 2 diabetes in the elderly.

Reductions of approximately 40% in mitochondrial oxidative and phosphorylation activity in muscle have been observed in healthy, young, lean persons with insulin resistance whose parents have type 2 diabetes.^{40,51} The decrease in flux in the tricarboxylic acid cycle and ATP synthesis in muscle was paralleled by a reduction of approximately 40% in mitochondrial content.²² Thus, at least in this cohort, it is likely that a reduction in mitochondrial content, owing to reduced mitochondrial biogenesis, is responsible for the reduced mitochondrial oxidative and phosphorylation activity and may be an acquired abnormality.^{39,52} Nevertheless, given the key role

of mitochondrial activity in the regulation of fat metabolism in muscle cells,^{28,30,32,53,54} these data suggest that the reduced mitochondrial function may be an important predisposing factor that promotes DAG accumulation in muscle cells and insulin resistance in muscle among persons with insulin resistance whose parents have type 2 diabetes.

GENETIC ALTERATIONS PROMOTING ECTOPIC LIPID ACCUMULATION IN THE LIVER

Although nonalcoholic fatty liver disease is most often associated with obesity, there are important exceptions to this rule in which nonalcoholic fatty liver disease and hepatic insulin resistance are observed in lean persons.^{36,55,56} Healthy, young, lean, Asian Indian men have a markedly higher prevalence of hepatic steatosis associated with hepatic insulin resistance than healthy, young, lean men of other races or ethnic groups.⁵⁷ Polymorphisms in the insulin-response element for the gene encoding apolipoprotein C3 (*APOC3*) have been shown to predispose such persons to nonalcoholic fatty liver disease and insulin resistance.⁵⁸ These polymorphisms led to a 30% increase in plasma apolipoprotein C3 concentrations. The increase in apolipoprotein C3 inhibits lipoprotein lipase activity, limiting peripheral clearance of chylomicrons and causing postprandial hypertriglyceridemia. As a result, carriers of the *APOC3* variant alleles have increased hepatic uptake of lipids from chylomicron remnants, predisposing them to nonalcoholic fatty liver disease and hepatic insulin resistance (Fig. 3). These results were replicated in a cohort of lean men of European descent.⁵⁹

Genetic evidence in support of the role of alterations in apolipoprotein in the regulation of hepatic triglyceride synthesis comes from studies in transgenic mice that overexpress human apolipoprotein C3 in the liver. When placed on a normal chow diet, the transgenic mice manifest no metabolic phenotype. However, when placed on a high-fat diet, these mice have much greater hepatic triglyceride and DAG accumulation associated with hepatic PKC ϵ activation and hepatic insulin resistance than their wild-type littermates.⁶⁰ These studies suggest that gene-environment interactions can predispose lean per-

sons to nonalcoholic fatty liver disease, hepatic insulin resistance, and type 2 diabetes, and such interactions may also involve many potential variants in plasma apolipoproteins (e.g., variants in apolipoprotein A5 and apolipoprotein A1) that are known to affect lipoprotein lipase activity. It is also noteworthy that the *APOC3* gene–environment interaction has been observed in men only, probably reflecting a protective effect of estradiol on the ability of apolipoprotein C3 to inhibit lipoprotein lipase activity and promote ectopic fat storage in premenopausal women.⁶¹ Furthermore, the *APOC3* gene–environment interaction is not observed in obese persons; such persons typically have hepatic steatosis, which will mask the relatively subtle effect that these *APOC3* variants have in predisposing persons to nonalcoholic fatty liver disease and hepatic insulin resistance.

Hispanics represent another large ethnic group at risk for nonalcoholic fatty liver disease, insulin resistance, and type 2 diabetes. A genome-wide association study identified a missense mutation (I148 M in *PNPLA3*) that is more prevalent in Hispanics than in other ethnic groups and that is strongly associated with nonalcoholic fatty liver disease.⁶² Though the association between this polymorphism and hepatic steatosis has been reproduced in other populations, there is, surprisingly, no association with insulin resistance. However, these studies involved obese persons who already had insulin resistance, as measured with the use of a homeostatic model assessment, which is a relatively insensitive and nonspecific method for assessing insulin resistance.

Finally, as might be expected from the associations between ectopic lipid content and insulin resistance in lipodystrophic mice and humans, genes that regulate lipogenesis (e.g., *AGPAT2* and *PPARG*),⁶³ leading to lipodystrophy, and alterations in genes that regulate lipolysis (e.g., the genes encoding perilipin [*PLIN1*])⁶⁴ also lead to ectopic lipid deposition and insulin resistance.

REVERSAL OF INSULIN RESISTANCE
AND DIABETES BY REDUCTION
OF ECTOPIC FAT

Further evidence that ectopic lipid accumulation in muscle and the liver plays a causal role in the

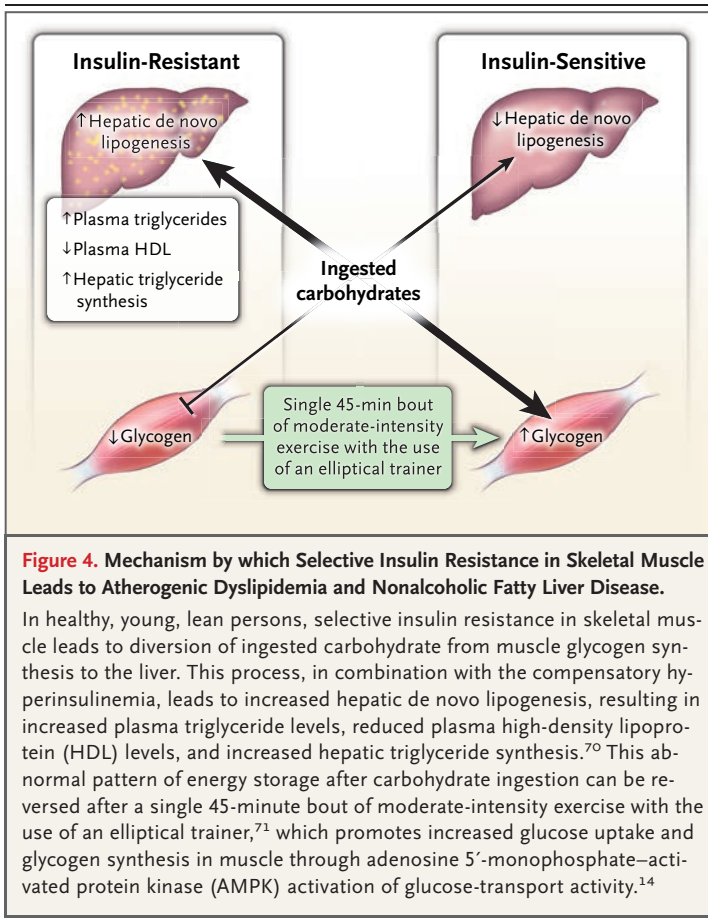
pathogenesis of insulin resistance and type 2 diabetes in humans is provided by studies showing that reduction of ectopic lipid content is associated with reversal of insulin resistance in these organs. One study showed that restoring plasma leptin to physiologic levels in patients with diabetes and lipodystrophy normalized fasting plasma glucose and plasma lipid concentrations.³⁶ These improvements in insulin-stimulated glucose metabolism, which may be attributable to reversal of insulin resistance in muscle and the liver, were associated with large reductions in hepatic triglyceride content and muscle-cell fat content.³⁶

Similarly, modest weight loss (approximately 10% of body weight) with a hypocaloric diet resulted in a marked reduction in hepatic triglyceride concentrations and normalization of hepatic insulin sensitivity, rates of hepatic glucose production, and fasting plasma glucose concentrations in patients with type 2 diabetes.⁵⁶ Similarly, Lim et al. found marked reductions in liver fat and hepatic insulin resistance and reversal of type 2 diabetes in patients following a hypocaloric diet.⁶⁵ Reductions in muscle-cell fat and the reversal of insulin resistance in muscle have also been observed after weight reduction of approximately 10% in young, lean persons with insulin resistance whose parents had type 2 diabetes.⁶⁶

Thiazolidinediones also reduce hepatic steatosis and improve insulin sensitivity in muscle and the liver^{67,68} by enhancing adipocyte insulin sensitivity and shifting ectopic lipid from muscle and the liver to subcutaneous adipose tissue.⁶⁷

SKELETAL-MUSCLE INSULIN
RESISTANCE, DYSLIPIDEMIA, AND
NONALCOHOLIC FATTY LIVER DISEASE

Increased muscle-cell fat and insulin resistance in skeletal muscle are early defects observed in the pathogenesis of type 2 diabetes.^{14,69} In healthy young persons, selective insulin resistance in muscle promotes atherogenic dyslipidemia by changing the pattern of ingested carbohydrate from skeletal-muscle glycogen synthesis to hepatic de novo lipogenesis, resulting in increased plasma triglyceride concentrations and decreased plasma concentrations of high-density lipoprotein (Fig. 4).⁷⁰ Furthermore, this abnor-



mal pattern of energy storage was completely abrogated after a single bout of moderate-intensity exercise with the use of an elliptical trainer, which promoted muscle glycogen synthesis after carbohydrate ingestion through increased glucose-transport activity.^{14,71} These data show that insulin resistance in muscle is an early therapeutic target for the treatment and prevention of atherogenic dyslipidemia and nonalcoholic fatty liver disease in young persons with insulin resistance, who are prone to the metabolic syndrome and type 2 diabetes.

MACROPHAGE-INDUCED LIPOLYSIS, INFLAMMATION, AND FASTING HYPERGLYCEMIA

Although lipid-induced insulin resistance occurs early in the pathogenesis of type 2 diabetes and can be dissociated from inflammation at this

stage, a key question concerns identification of the factors that promote the progression from insulin resistance associated with ectopic lipid accumulation to impaired glucose tolerance and fasting hyperglycemia. The canonical view of this process attributes impaired pancreatic beta-cell and alpha-cell function, along with inflammation, to this transition, in which beta-cell and alpha-cell defects lead to increased hepatic gluconeogenic gene transcription and inflammation inhibits insulin action through the release of cytokines and adipocytokines. Increased cytokine levels in turn lead to inhibition of insulin signaling and increased hepatic gluconeogenic protein transcription through activation of the nuclear factor $\kappa\beta$, Jun N-terminal kinase, and ceramide biosynthetic pathways.

An alternative hypothesis linking inflammation to the progression to fasting hyperglycemia is the potential effect of macrophage-induced lipolysis on the regulation of hepatic gluconeogenesis (Fig. 5). In this regard, increased lipolysis in rat models of poorly controlled type 1 diabetes and type 2 diabetes results in increased hepatic gluconeogenesis *in vivo* by two nontranscriptionally mediated mechanisms.⁷² First, increased lipolysis leads to increased fatty acid delivery to the liver, resulting in increased hepatic acetyl CoA concentrations and increased hepatic gluconeogenesis through allosteric activation of pyruvate carboxylase. Second, increased lipolysis leads to increased glycerol delivery to the liver, resulting in increased conversion of glycerol to glucose through a substrate-driven mechanism. Subsequent long-term increases in hepatic gluconeogenesis could lead to impaired insulin secretion by beta cells and inappropriate glucagon secretion by alpha cells as a result of glucose toxicity, exacerbating fasting and postprandial hyperglycemia.

Although speculative, this hypothesis proposes that macrophage-induced lipolysis, as opposed to alterations in circulating cytokines and hepatic gluconeogenic protein transcription, is the major culprit in the transition from insulin resistance to impaired glucose tolerance and type 2 diabetes. This hypothesis is also consistent with a study that showed no relationship between hepatic gluconeogenic protein expression and fasting hyperglycemia in obese persons.⁷³

POTENTIAL TREATMENTS
FOR ECTOPIC LIPID ACCUMULATION
AND INSULIN RESISTANCE

Ectopic lipid-induced insulin resistance represents a surfeit of intracellular energy in the form of DAGs, leading to activation of PKC θ in muscle and PKC ϵ in the liver and subsequent inhibition of insulin signaling in these tissues. This hypothesis can explain the insulin resistance associated with obesity, aging, lipodystrophy, prediabetes, and type 2 diabetes and the reversal of insulin resistance and diabetes after weight loss and thiazolidinedione therapy. Teleologically, insulin resistance in muscle and the liver that is induced by DAGs and nPKCs may represent a cell-autonomous mechanism for turning off energy storage in liver and muscle cells when intracellular lipids are in excess and routing this excess energy to adipose tissue for storage.

Although reduction of ectopic lipid content and insulin resistance by means of weight-loss interventions (ideally combined with exercise) is clearly the preferred medical therapy for these disorders, recidivism after weight loss is extremely common. Bariatric surgery is more successful at achieving long-term weight loss, but this procedure is invasive, expensive, and not without risks. Consequently, there is a need for a drug that reduces ectopic liver fat and insulin resistance. In this regard, fibroblast growth factor 21 has been shown to be effective in reducing liver DAG-PKC ϵ activity as well as hepatic insulin resistance in animals and is now under investigation in clinical trials.⁷⁴

Another potential approach to decreasing ectopic lipid content has been the application of a liver-targeted mitochondrial protonophore to promote subtle increases in hepatic mitochondrial uncoupling. This approach has been shown to reverse hypertriglyceridemia, hepatic steatosis, insulin resistance, and hyperglycemia in rat models of nonalcoholic fatty liver disease and type 2 diabetes, with a relatively wide therapeutic index.⁷⁵ In addition to decreasing hepatic triglyceride and DAG content, PKC ϵ activity, and hepatic insulin resistance, this approach reduces hepatic acetyl CoA content, leading to decreased rates of hepatic gluconeogenesis and marked reductions in both fasting and postprandial hyperglycemia.⁷⁵ Furthermore, by increasing liver-

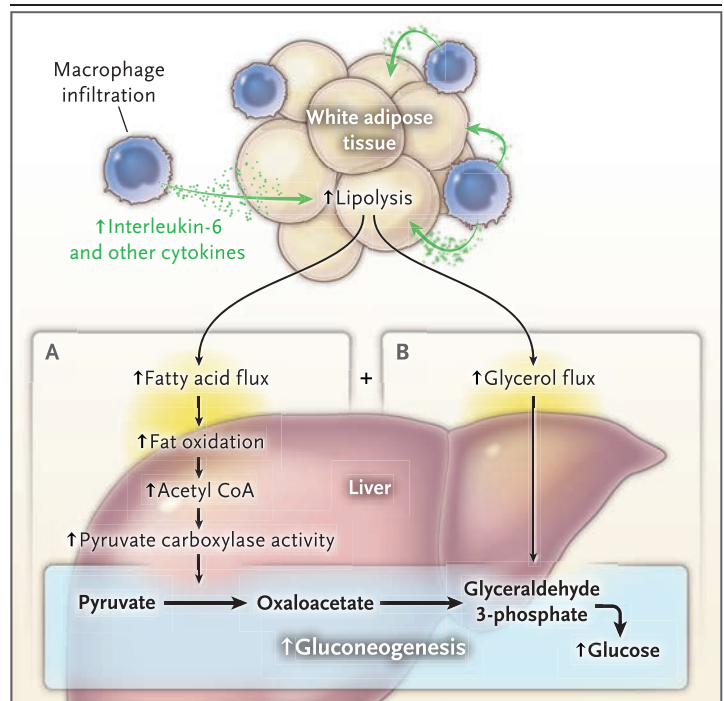


Figure 5. Potential Effect of Macrophage-Induced Lipolysis on Rates of Hepatic Gluconeogenesis and Fasting Hyperglycemia.

Macrophage infiltration of white adipose tissue leads to increased lipolysis through increased release of interleukin-6 and other macrophage-derived cytokines. Increased rates of lipolysis result in increased rates of hepatic gluconeogenesis by two mechanisms. In one mechanism, increased fatty acid delivery to the liver results in increased pyruvate carboxylase activity through hepatic acetyl CoA concentrations that rise as rates of acetyl CoA production through fat oxidation exceed rates of acetyl CoA oxidation in the tricarboxylic acid cycle. The other mechanism involves increased conversion of glycerol to glucose through a substrate-driven mechanism.

fat oxidation by 60%, this approach decreases hepatic production of very-low-density lipoprotein, resulting in decreased export of triglyceride to muscle and protection from lipid-induced insulin resistance in muscle.

In summary, these studies show the critical role of ectopic lipid accumulation in the pathogenesis of insulin resistance in muscle and the liver. This model also explains the improvements in insulin action with exercise, weight loss, and thiazolidinediones. Furthermore, increasing hepatic energy expenditure by promoting mitochondrial uncoupling could be a novel approach for treating the related epidemics of nonalcoholic fatty liver disease, the metabolic syndrome, and type 2 diabetes.

Disclosure forms provided by the author are available with the full text of this article at NEJM.org.

I thank Drs. Varman Samuel and Kitt Falk Petersen and members of my laboratory for discussions and comments.

REFERENCES

- International Diabetes Federation. IDf diabetes atlas. 6th ed. Brussels: International Diabetes Federation, 2014 (<http://www.idf.org/diabetesatlas>).
- Porte D Jr, Kahn SE. Beta-cell dysfunction and failure in type 2 diabetes: potential mechanisms. *Diabetes* 2001;50:Suppl 1:S160-S163.
- Rothman DL, Magnusson I, Cline G, et al. Decreased muscle glucose transport/phosphorylation is an early defect in the pathogenesis of non-insulin-dependent diabetes mellitus. *Proc Natl Acad Sci U S A* 1995;92:983-7.
- Shulman GI, Rothman DL, Jue T, Stein P, DeFronzo RA, Shulman RG. Quantitation of muscle glycogen synthesis in normal subjects and subjects with non-insulin-dependent diabetes by ¹³C nuclear magnetic resonance spectroscopy. *N Engl J Med* 1990;322:223-8.
- Taylor R, Magnusson I, Rothman DL, et al. Direct assessment of liver glycogen storage by ¹³C nuclear magnetic resonance spectroscopy and regulation of glucose homeostasis after a mixed meal in normal subjects. *J Clin Invest* 1996;97:126-32.
- Krssak M, Falk Petersen K, Dresner A, et al. Intramyocellular lipid concentrations are correlated with insulin sensitivity in humans: a ¹H NMR spectroscopy study. *Diabetologia* 1999;42:113-6. [Errata, *Diabetologia* 1999;42:386, 1269.]
- Perseghin G, Scifo P, De Cobelli F, et al. Intramyocellular triglyceride content is a determinant of in vivo insulin resistance in humans: a ¹H-¹³C nuclear magnetic resonance spectroscopy assessment in offspring of type 2 diabetic parents. *Diabetes* 1999;48:1600-6.
- Stefan N, Kantartzis K, Machann J, et al. Identification and characterization of metabolically benign obesity in humans. *Arch Intern Med* 2008;168:1609-16.
- Randle PJ, Garland PB, Hales CN, Newsholme EA. The glucose fatty-acid cycle: its role in insulin sensitivity and the metabolic disturbances of diabetes mellitus. *Lancet* 1963;1:785-9.
- Roden M, Price TB, Perseghin G, et al. Mechanism of free fatty acid-induced insulin resistance in humans. *J Clin Invest* 1996;97:2859-65.
- Dresner A, Laurent D, Marcucci M, et al. Effects of free fatty acids on glucose transport and IRS-1-associated phosphatidylinositol 3-kinase activity. *J Clin Invest* 1999;103:253-9.
- Petersen KF, Hendler R, Price T, et al. ¹³C/³¹P NMR studies on the mechanism of insulin resistance in obesity. *Diabetes* 1998;47:381-6.
- Cline GW, Petersen KF, Krssak M, et al. Impaired glucose transport as a cause of decreased insulin-stimulated muscle glycogen synthesis in type 2 diabetes. *N Engl J Med* 1999;341:240-6.
- Perseghin G, Price TB, Petersen KF, et al. Increased glucose transport-phosphorylation and muscle glycogen synthesis after exercise training in insulin-resistant subjects. *N Engl J Med* 1996;335:1357-62.
- Griffin ME, Marcucci MJ, Cline GW, et al. Free fatty acid-induced insulin resistance is associated with activation of protein kinase C theta and alterations in the insulin signaling cascade. *Diabetes* 1999;48:1270-4.
- Yu C, Chen Y, Cline GW, et al. Mechanism by which fatty acids inhibit insulin activation of insulin receptor substrate-1 (IRS-1)-associated phosphatidylinositol 3-kinase activity in muscle. *J Biol Chem* 2002;277:50230-6.
- Kim JK, Fillmore JJ, Sunshine MJ, et al. PKC-theta knockout mice are protected from fat-induced insulin resistance. *J Clin Invest* 2004;114:823-7.
- Morino K, Neschen S, Bilz S, et al. Muscle-specific IRS-1 Ser→Ala transgenic mice are protected from fat-induced insulin resistance in skeletal muscle. *Diabetes* 2008;57:2644-51.
- Li Y, Soos TJ, Li X, et al. Protein kinase C Theta inhibits insulin signaling by phosphorylating IRS1 at Ser(1101). *J Biol Chem* 2004;279:45304-7.
- Itani SI, Ruderman NB, Schmieder F, Boden G. Lipid-induced insulin resistance in human muscle is associated with changes in diacylglycerol, protein kinase C, and IkappaB-alpha. *Diabetes* 2002;51:2005-11.
- Szendroedi J, Yoshimura T, Phielix E, et al. Role of diacylglycerol activation of PKCθ in lipid-induced muscle insulin resistance in humans. *Proc Natl Acad Sci U S A* 2014;111:9597-602.
- Morino K, Petersen KF, Dufour S, et al. Reduced mitochondrial density and increased IRS-1 serine phosphorylation in muscle of insulin-resistant offspring of type 2 diabetic parents. *J Clin Invest* 2005;115:3587-93.
- Corbould A, Kim YB, Youngren JF, et al. Insulin resistance in the skeletal muscle of women with PCOS involves intrinsic and acquired defects in insulin signaling. *Am J Physiol Endocrinol Metab* 2005;288:E1047-E1054.
- Itani SI, Pories WJ, Macdonald KG, Dohm GL. Increased protein kinase C theta in skeletal muscle of diabetic patients. *Metabolism* 2001;50:553-7.
- Samuel VT, Liu ZX, Qu X, et al. Mechanism of hepatic insulin resistance in non-alcoholic fatty liver disease. *J Biol Chem* 2004;279:32345-53.
- Krssak M, Brehm A, Bernroider E, et al. Alterations in postprandial hepatic glycogen metabolism in type 2 diabetes. *Diabetes* 2004;53:3048-56.
- Magnusson I, Rothman DL, Katz LD, Shulman RG, Shulman GI. Increased rate of gluconeogenesis in type II diabetes mellitus: a ¹³C nuclear magnetic resonance study. *J Clin Invest* 1992;90:1323-7.
- Choi CS, Savage DB, Abu-Elheiga L, et al. Continuous fat oxidation in acetyl-CoA carboxylase 2 knockout mice increases total energy expenditure, reduces fat mass, and improves insulin sensitivity. *Proc Natl Acad Sci U S A* 2007;104:16480-5.
- Matsuzaka T, Shimano H, Yahagi N, et al. Crucial role of a long-chain fatty acid elongase, Elovl6, in obesity-induced insulin resistance. *Nat Med* 2007;13:1193-202.
- Savage DB, Choi CS, Samuel VT, et al. Reversal of diet-induced hepatic steatosis and hepatic insulin resistance by antisense oligonucleotide inhibitors of acetyl-CoA carboxylases 1 and 2. *J Clin Invest* 2006;116:817-24.
- Varela GM, Antwi DA, Dhir R, et al. Inhibition of ADRP prevents diet-induced insulin resistance. *Am J Physiol Gastrointest Liver Physiol* 2008;295:G621-G628.
- Zhang D, Liu Z-X, Choi CS, et al. Mitochondrial dysfunction due to long-chain Acyl-CoA dehydrogenase deficiency causes hepatic steatosis and hepatic insulin resistance. *Proc Natl Acad Sci U S A* 2007;104:17075-80.
- Kumashiro N, Erion DM, Zhang D, et al. Cellular mechanism of insulin resistance in nonalcoholic fatty liver disease. *Proc Natl Acad Sci U S A* 2011;108:16381-5.
- Magkos F, Su X, Bradley D, et al. Intrahepatic diacylglycerol content is associated with hepatic insulin resistance in obese subjects. *Gastroenterology* 2012;142(7):1444.e2-1446.e2.
- Raddatz K, Turner N, Frangioudakis G, et al. Time-dependent effects of Prkce deletion on glucose homeostasis and hepatic lipid metabolism on dietary lipid oversupply in mice. *Diabetologia* 2011;54:1447-56.
- Petersen KF, Oral EA, Dufour S, et al. Leptin reverses insulin resistance and hepatic steatosis in patients with severe lipodystrophy. *J Clin Invest* 2002;109:1345-50.
- Lee HY, Choi CS, Birkenfeld AL, et al. Targeted expression of catalase to mitochondria prevents age-associated reductions in mitochondrial function and insulin resistance. *Cell Metab* 2010;12:668-74.
- Petersen KF, Befroy D, Dufour S, et al. Mitochondrial dysfunction in the elderly: possible role in insulin resistance. *Science* 2003;300:1140-2.
- Morino K, Petersen KF, Sono S, et al.

- Regulation of mitochondrial biogenesis by lipoprotein lipase in muscle of insulin-resistant offspring of parents with type 2 diabetes. *Diabetes* 2012;61:877-87.
40. Petersen KF, Dufour S, Befroy D, Garcia R, Shulman GI. Impaired mitochondrial activity in the insulin-resistant offspring of patients with type 2 diabetes. *N Engl J Med* 2004;350:664-71.
 41. Kim JK, Gavrilova O, Chen Y, Reitman ML, Shulman GI. Mechanism of insulin resistance in A-ZIP/F-1 fatless mice. *J Biol Chem* 2000;275:8456-60.
 42. Kim JK, Fillmore JJ, Chen Y, et al. Tissue-specific overexpression of lipoprotein lipase causes tissue-specific insulin resistance. *Proc Natl Acad Sci U S A* 2001;98:7522-7.
 43. Ferreira LD, Pulawa LK, Jensen DR, Eckel RH. Overexpressing human lipoprotein lipase in mouse skeletal muscle is associated with insulin resistance. *Diabetes* 2001;50:1064-8. [Erratum, *Diabetes* 2001;50:1512.]
 44. Amaro A, Fabbrini E, Kars M, et al. Dissociation between intrahepatic triglyceride content and insulin resistance in familial hypobetalipoproteinemia. *Gastroenterology* 2010;139:149-53.
 45. Cantley JL, Yoshimura T, Camporez JP, et al. CGI-58 knockdown sequesters diacylglycerols in lipid droplets/ER-preventing diacylglycerol-mediated hepatic insulin resistance. *Proc Natl Acad Sci U S A* 2013;110:1869-74.
 46. Farese RV Jr, Zechner R, Newgard CB, Walther TC. The problem of establishing relationships between hepatic steatosis and hepatic insulin resistance. *Cell Metab* 2012;15:570-3.
 47. Amati F, Dubé JJ, Alvarez-Carnero E, et al. Skeletal muscle triglycerides, diacylglycerols, and ceramides in insulin resistance: another paradox in endurance-trained athletes? *Diabetes* 2011;60:2588-97.
 48. Boumezbeur F, Mason GF, de Graaf RA, et al. Altered brain mitochondrial metabolism in healthy aging as assessed by in vivo magnetic resonance spectroscopy. *J Cereb Blood Flow Metab* 2010;30:211-21.
 49. Zong H, Ren JM, Young LH, et al. AMP kinase is required for mitochondrial biogenesis in skeletal muscle in response to chronic energy deprivation. *Proc Natl Acad Sci U S A* 2002;99:15983-7.
 50. Reznick RM, Zong H, Li J, et al. Aging-associated reductions in AMP-activated protein kinase activity and mitochondrial biogenesis. *Cell Metab* 2007;5:151-6.
 51. Befroy DE, Petersen KF, Dufour S, et al. Impaired mitochondrial substrate oxidation in muscle of insulin-resistant offspring of type 2 diabetic patients. *Diabetes* 2007;56:1376-81.
 52. Sleight A, Raymond-Barker P, Thackray K, et al. Mitochondrial dysfunction in patients with primary congenital insulin resistance. *J Clin Invest* 2011;121:2457-61.
 53. Choi CS, Fillmore JJ, Kim JK, et al. Overexpression of uncoupling protein 3 in skeletal muscle protects against fat-induced insulin resistance. *J Clin Invest* 2007;117:1995-2003.
 54. Kelley DE, He J, Menshikova EV, Ritov VB. Dysfunction of mitochondria in human skeletal muscle in type 2 diabetes. *Diabetes* 2002;51:2944-50.
 55. Angulo P. Nonalcoholic fatty liver disease. *N Engl J Med* 2002;346:1221-31.
 56. Petersen KF, Dufour S, Befroy D, Lehrke M, Hendler RE, Shulman GI. Reversal of nonalcoholic hepatic steatosis, hepatic insulin resistance, and hyperglycemia by moderate weight reduction in patients with type 2 diabetes. *Diabetes* 2005;54:603-8.
 57. Petersen KF, Dufour S, Feng J, et al. Increased prevalence of insulin resistance and nonalcoholic fatty liver disease in Asian-Indian men. *Proc Natl Acad Sci U S A* 2006;103:18273-7.
 58. Petersen KF, Dufour S, Hariri A, et al. Apolipoprotein C3 gene variants in nonalcoholic fatty liver disease. *N Engl J Med* 2010;362:1082-9.
 59. Peter A, Kantartzis K, Machicao F, et al. Visceral obesity modulates the impact of apolipoprotein C3 gene variants on liver fat content. *Int J Obes (Lond)* 2012;36:774-82.
 60. Lee HY, Birkenfeld AL, Jornayvaz FR, et al. Apolipoprotein CIII overexpressing mice are predisposed to diet-induced hepatic steatosis and hepatic insulin resistance. *Hepatology* 2011;54:1650-60.
 61. Camporez JP, Jornayvaz FR, Lee HY, et al. Cellular mechanism by which estradiol protects female ovariectomized mice from high-fat diet-induced hepatic and muscle insulin resistance. *Endocrinology* 2013;154:1021-8.
 62. Romeo S, Kozlitina J, Xing C, et al. Genetic variation in PNPLA3 confers susceptibility to nonalcoholic fatty liver disease. *Nat Genet* 2008;40:1461-5.
 63. Cortés VA, Curtis DE, Sukumaran S, et al. Molecular mechanisms of hepatic steatosis and insulin resistance in the AGPAT2-deficient mouse model of congenital generalized lipodystrophy. *Cell Metab* 2009;9:165-76.
 64. Gandotra S, Le Dour C, Bottomley W, et al. Perilipin deficiency and autosomal dominant partial lipodystrophy. *N Engl J Med* 2011;364:740-8.
 65. Lim EL, Hollingsworth KG, Aribisala BS, Chen MJ, Mathers JC, Taylor R. Reversal of type 2 diabetes: normalisation of beta cell function in association with decreased pancreas and liver triacylglycerol. *Diabetologia* 2011;54:2506-14.
 66. Petersen KF, Dufour S, Morino K, Yoo PS, Cline GW, Shulman GI. Reversal of muscle insulin resistance by weight reduction in young, lean, insulin-resistant offspring of parents with type 2 diabetes. *Proc Natl Acad Sci U S A* 2012;109:8236-40.
 67. Mayerson AB, Hundal RS, Dufour S, et al. The effects of rosiglitazone on insulin sensitivity, lipolysis, and hepatic and skeletal muscle triglyceride content in patients with type 2 diabetes. *Diabetes* 2002;51:797-802.
 68. Belfort R, Harrison SA, Brown K, et al. A placebo-controlled trial of pioglitazone in subjects with nonalcoholic steatohepatitis. *N Engl J Med* 2006;355:2297-307.
 69. Perseghin G, Ghosh S, Gerow K, Shulman GI. Metabolic defects in lean non-diabetic offspring of NIDDM parents: a cross-sectional study. *Diabetes* 1997;46:1001-9.
 70. Petersen KF, Dufour S, Savage DB, et al. The role of skeletal muscle insulin resistance in the pathogenesis of the metabolic syndrome. *Proc Natl Acad Sci U S A* 2007;104:12587-94.
 71. Rabøl R, Petersen KF, Dufour S, Flannery C, Shulman GI. Reversal of muscle insulin resistance with exercise reduces postprandial hepatic de novo lipogenesis in insulin resistant individuals. *Proc Natl Acad Sci U S A* 2011;108:13705-9.
 72. Perry RJ, Zhang X-M, Zhang D, et al. Leptin reverses diabetes by suppression of the hypothalamic-pituitary-adrenal axis. *Nat Med* 2014;20:759-63.
 73. Samuel VT, Beddow SA, Iwasaki T, et al. Fasting hyperglycemia is not associated with increased expression of PEPCK or G6Pc in patients with type 2 diabetes. *Proc Natl Acad Sci U S A* 2009;106:12121-6.
 74. Camporez JP, Jornayvaz FR, Petersen MC, et al. Cellular mechanisms by which FGF21 improves insulin sensitivity in male mice. *Endocrinology* 2013;154:3099-109.
 75. Perry RJ, Kim T, Zhang XM, et al. Reversal of hypertriglyceridemia, fatty liver disease, and insulin resistance by a liver-targeted mitochondrial uncoupler. *Cell Metab* 2013;18:740-8.

Copyright © 2014 Massachusetts Medical Society.

MY NEJM IN THE JOURNAL ONLINE

Individual subscribers can store articles and searches using a feature on the *Journal's* website (NEJM.org) called "My NEJM."

Each article and search result links to this feature. Users can create personal folders and move articles into them for convenient retrieval later.